

199999/120000 COUNTS DUAL DISPLAY DIGITAL MULTIMETER



GDM-8255A (199999 Counts)
GDM-8251A (120000 Counts)



FEATURES

- * GDM-8255A : 199,999 Counts Display
GDM-8251A : 120,000 Counts Display
- * VFD Two Colors Display
- * 0.012% DCV Accuracy
- * True RMS (AC, AC+DC)
- * 9 Major Measuring Functions and 10 Advanced Measurement Functions
- * 2W/4W Resistance Measurement
- * High Voltage 1000V and 10A Current Range
- * Standard Interface : RS-232C, USB Device, Digital I/O
- * Free PC Software (DMM-VIEWER), LabVIEW Driver
- * Optional 16+2 Channels Scanner Card (GDM-SC1 for GDM-8255A only)

GTL-117 Test Lead

For: GDM-8255A/8251A,
GDM-8245/8246



GTL-247 USB Cable

A-A type cable,
Approx. 1.8m
For: GDM-8255A/8251A



GDM-01 Calibration key

For: GDM-8255A/8251A



The GDM-8255A/8251A portable precision multimeters feature 199,999/120,000 counts, a dual display, a 0.012% DCV accuracy and 2w/4w measurement. The VFD display technology provides the excellent observation of contrast and brightness.

The GDM-8255A/8251A carries an extensive list of standard measurement items with a dual-display allowing two measurement items to be displayed simultaneously. Advanced measurement functions, such as Max/Min, Hold, Relative value and Compare, are suitable for a multiplicity of applications such as production testing, research and field verification. The USB, RS-232C and 9-pin digital I/O interface are included as standard features for remote control and data capturing for ATE applications.

For convenient PC-based remote control and extensive data capture, the GDM-8255A/8251A includes DMM-Viewer software at no additional cost. DMM-Viewer mimics the operation of the multimeters on the PC, allowing you to quickly use the software with little effort.

The optional scanner card (GDM-SC1), creates a self-contained multipoint measurement solution with plug-in design. This approach eliminates the complexities of multipoint measurements and data processing. The scanner lets users effectively measure multiple channels connected to a single GDM-8255A. Each scanner card has 16 general purpose channels and 2 extra channels for current (ACI, DCI) measurements. All channels are fully isolated (Hi and Lo). Up to two scanner cards can be inserted into each multimeter for a maximum of 36 channels. These optional modules not only provide customers with a complete hands-free multiple measurement solution, but also provide a cost effect upgrade path compared to purchasing dedicated instruments. (OPTIONAL FOR GDM-8255A ONLY)

SPECIFICATIONS		
	GDM-8255A	GDM-8251A
FULL SCALE		
	199,999 Counts	120,000 Counts
SAMPLE RATE		
	Slow : 5 1/2 digits, 10 readings/second Medium : 4 1/2 digits, 30 readings/second Fast : 3 1/2 digits, 60 readings/second	
DC VOLTAGE		
Range	100mV, 1V, 10V, 100V, 1000V 5 ranges	
Accuracy	± (0.012% rdg + 5 digits)	
Input Impedance	10MΩ	
AC VOLTAGE True RMS		
Range	100mV, 1V, 10V, 100V, 750V 5 ranges	
Accuracy	20Hz~45Hz : (1% rdg + 100 digits) 45Hz ~ 10kHz : ± (0.2% rdg + 100 digits) 10kHz ~ 30kHz : ± (1% rdg + 100 digits) 30kHz~100kHz : ± (3% rdg + 200 digits)	
Input Impedance	1.1MΩ in parallel with approx. 100pF	
DC CURRENT		
Range	10mA, 100mA, 1A, 10A 4 ranges	
Accuracy	10mA , 100mA : ± (0.05% rdg + 15 digits) 1A, 10A range : ± (0.2% rdg + 5 digits)	
AC CURRENT TRUE RMS		
Range	10mA, 100mA, 1A, 10A 4 ranges	
Accuracy	10mA , 100mA range : 20Hz ~ 50Hz : ± (1.5% rdg + 100 digits) 50Hz ~ 10kHz : ± (0.5% rdg + 100 digits) 10kHz~20kHz : ± (2% rdg + 200 digits) 1A , 10A range : 50Hz ~ 10kHz : ± (1% rdg + 100 digits)	
RESISTANCE		
Range	100Ω , 1kΩ , 10kΩ , 100kΩ , 1MΩ , 10MΩ , 100MΩ 7 ranges	
2W Accuracy	100Ω range : ± (0.1% rdg + 8digits) (*) 1kΩ range : ± (0.08% rdg + 5 digits) (*) 10kΩ ~ 1MΩ 3 ranges : ± (0.06% rdg + 5digits) 10MΩ range : ± (0.3% rdg + 5 digits) 100MΩ range : ± (3% rdg + 8 digits)	
4W Accuracy	100Ω range : ± (0.05% rdg + 8 digits) (*) 1kΩ ~ 1MΩ 4 ranges : ± (0.05% rdg + 5 digits) 10MΩ range : ± (0.3% rdg + 5 digits) 100MΩ range : ± (3% rdg + 8 digits)	
DIODE TEST		
Open Circuit Voltage 2.0V, Test Current 0.5mA		
FREQUENCY		
10Hz~800kHz		



GDM-8255A

GDM-8251A Rear Panel



GDM-8255A Rear Panel



SPECIFICATIONS	
CONTINUITY BEEPER	
1 ~ 100Ω	Define by user
TEMPERATURE	
0 ℃ ~ 300 ℃	℃ : J, K, T Type
OTHER FUNCTIONS	
Auto range / Manual, Math : MX + B / % / 1/X	
Max, Min, dBm, dB, REL, Hold, Compare, Store, Recall	
DISPLAY	
VFD, Two Colors Display	
INTERFACE	
Digital I/O, USB, RS-232C	
POWER SOURCE	
AC 100V~240V± 10%, 50/60Hz	
DIMENSIONS & WEIGHT	
265 (W) x 107 (H) x 350 (D) mm, Approx. 2.6 kg	
NOTE : (*)USE "REL" Mode	

ORDERING INFORMATION	
GDM-8255A	199,999 Counts Dual Display Digital Multimeter
GDM-8251A	120,000 Counts Dual Display Digital Multimeter
ACCESSORIES :	
Quick start user manual x 1, Power cord x 1, Test lead GTL-117 x 1, USB Cable GTL-247	
CD x 1 (including complete user manual, upgrade program and PC software DMM Viewer),	
Calibration key GDM-01 x 1 (Compatible with Fluke 5720A/5725A calibrators only)	
OPTION	
Opt.01	Scanner Card (GDM-SC1 for GDM-8255A only)
OPTIONAL ACCESSORIES	
GTL-108A	4W Type test lead
GTL-232	RS232C Cable, 9-pin female to 9-pin, null modem for computer
FREE DOWNLOAD	
PC Software	DMM-VIEWER
Driver	USB Driver
	LabVIEW Driver

GDM-SC1 Scanner card

Multipoint Testing can be facilitated by simple insertion of scanner card.
For: GDM-8255A



GTL-108A 4W Type Test Lead

For: GOM-801H/802, GDM-8255A/8251A



GTL-232 RS-232C Cable

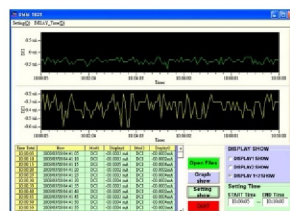
For: GDM-8255A/8251A



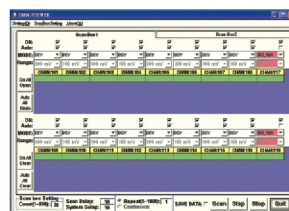
DMM-Viewer PC Software



General Control Mode



Reload-Data Graphic



Scanner Control Mode