

DIGITAL MULTIMETER CD5001

APPLICATIONS AND FEATURES

This instrument is a true RMS (root mean square) digital multimeter designed for measurements within the range of CAT. IV 600V and CAT. III 1000V. It is suitable for measurements in electrical work sites of low-voltage circuits.

- Full 4-digit 9999 count
- True RMS
- EF (Electric Field) sensing
- AUTO V function automatically distinguishes between DC and AC voltage.
- Auto Hold function automatically holds the measurement value once it stabilizes.
- Large, easy-to-see display
- Compact, lightweight, easy-to-hold design
- Auto power off after approx. 30min of inactivity(cancelable)
- Bright backlight

SPECIFICATIONS

	Measuring range	Best accuracy	Resolution	Input impedance
DCV	999.9m/9.999/99.99/999.9V	$\pm(0.5\%+2)$	0.1mV	10M \sim
ACV	999.9m/9.999/99.99/999.9V	$\pm(1.0\%+5)$	0.1mV	11M Ω
Resistance	999.9/ Ω /9.999k/99.99k/999.9k/9.999M/99.99M Ω	$\pm(0.5\%+5)$	0.1 Ω	
Capacitance	999.9n/9.999 μ /99.99 μ /999.9 μ /9.999m/99.99mF	$\pm(5\%+5)$	0.1nF	
Frequency	9.999/99.99/999.9/9.999k/99.99kHz	$\pm(0.1\%+5)$	0.001Hz	
Continuity	Buzzer sounds at 30 to 70 Ω or less Open voltage: approx. 0.6V			
EF detection	Detects ACV and EF of approx. 80V or more			

Operation method	$\Delta\Sigma$ method
AC detection method	True RMS (AC coupling)
Display	Max. 9999 counts
Sampling rate	Approx.5 times/sec. (DCV)
Over-range display	"OL" shown in numeric section
Range selection	Auto and manual
Polarity switching	Automatic selection (Only "-" is displayed.)
Battery low warning	⚡ lights up on display when supply voltage from internal batteries drops below about 2.5V.
Operating environmental condition	Altitude no more than 2000 m, indoor use, environmental pollution degree II
Operating temperature / humidity	Temperature: 5 to 40°C Humidity is as follows (without condensation) . 5 to 31°C: Max.80%RH 31 to 40°C: Linearly decreases from 80% RH to 50% RH.
Storage temperature / humidity	Temperature -10 to +40°C : No more than 80% RH, without condensation Temperature +40 to +50°C: No more than 70% RH, without condensation
Power consumption	Approx.2 mA (during DCV measurement, with backlight off)
Battery life	Approx.550 hours (during DCV measurement, with backlight off)
Safety standards	IEC61010 CAT. IV 600V / CAT. III 1000V
EMC Directive	IEC61326
Bandwidth	40 - 400 Hz
Battery	LR03 X 2
Size / Mass	H149 X W72 X D37 mm / approx. 232 g
Standard accessories included	Test lead (ATL101), Instruction manual



A battery for monitoring has been installed prior to shipment from the factory. It may be discharged before the expiration of the described battery life. This battery is used to check the functions and performance of the product. Specifications and external appearance of the product described above may be revised for modification without prior notice.

DIGITAL MULTIMETER CD5001

EF function

This function detects the electric field generated by AC voltage.



AUTO HOLD function

When a new stable measurement value is detected in the Auto Hold mode, the buzzer sounds, and the new measurement value is automatically held.



AUTO V function

This function automatically detects whether the input voltage is AC or DC.



ATL101 TEST LEAD

Test pins are covered with removable caps. Pin tip: 18 mm Lead length: 1.15 m



Actual size

Compact design



Actual size

Test lead holders

These are useful for test leads storing, and also enable users to take measurements with one hand.



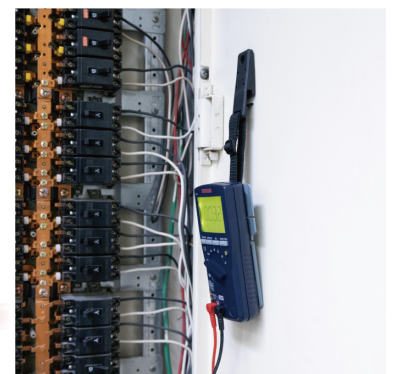
Tilt stand

This enables the device to stand at an angle on a table etc. and users to take measurements with both hands.



Hanger magnet HM-1 (optional accessory)

This enables to hang the device on metal walls and take measurements with both hands.



**COSINUS Messtechnik - Ihr Partner für Messlösung
in allen elektrischen und physikalischen Anwendungen**

COSINUS Messtechnik GmbH

Rotwandweg 4

82024 Taufkirchen

Tel.: 089 / 66 55 94 - 0

Fax: 089 / 66 55 94 -30

office@cosinus.de
www.cosinus.de